



## **SERVICE BOX HP**

**SAFE OPERATION AND EASY MAINTENANCE IN  
WASTEWATER TREATMENT FACILITIES,  
INDUSTRIAL APPLICATIONS AND BIOGAS PLANTS**

# PRODUCT FEATURES

SAFE. RELIABLE. SIMPLIFIED MAINTENANCE.

Municipal digesters operate with biogas pressure higher than industrial or agricultural digesters. This allows for simpler biogas management without biogas booster blowers. The Service Box High Pressure has been specifically designed to meet the higher biogas pressures demanded at your municipal wastewater treatment plant.

The Service Box HP is custom designed for municipal applications thanks to the corrosion resistant AISI 316 stainless steel construction, an integrated gas lock system to eliminate gas leakage during maintenance and CI I, Div. 1 approved motors and cover plates.

With our Service Box HP, the operation of mixers is greatly simplified. Adjusting the position and the height of the

mixer can be done from outside the tank, thanks to the proven winch positioning system. This allows for optimized tank mixing and confidence that your complete tank volume is utilized. The position of the mixer can be inspected at any time with the integrated inspection glass.

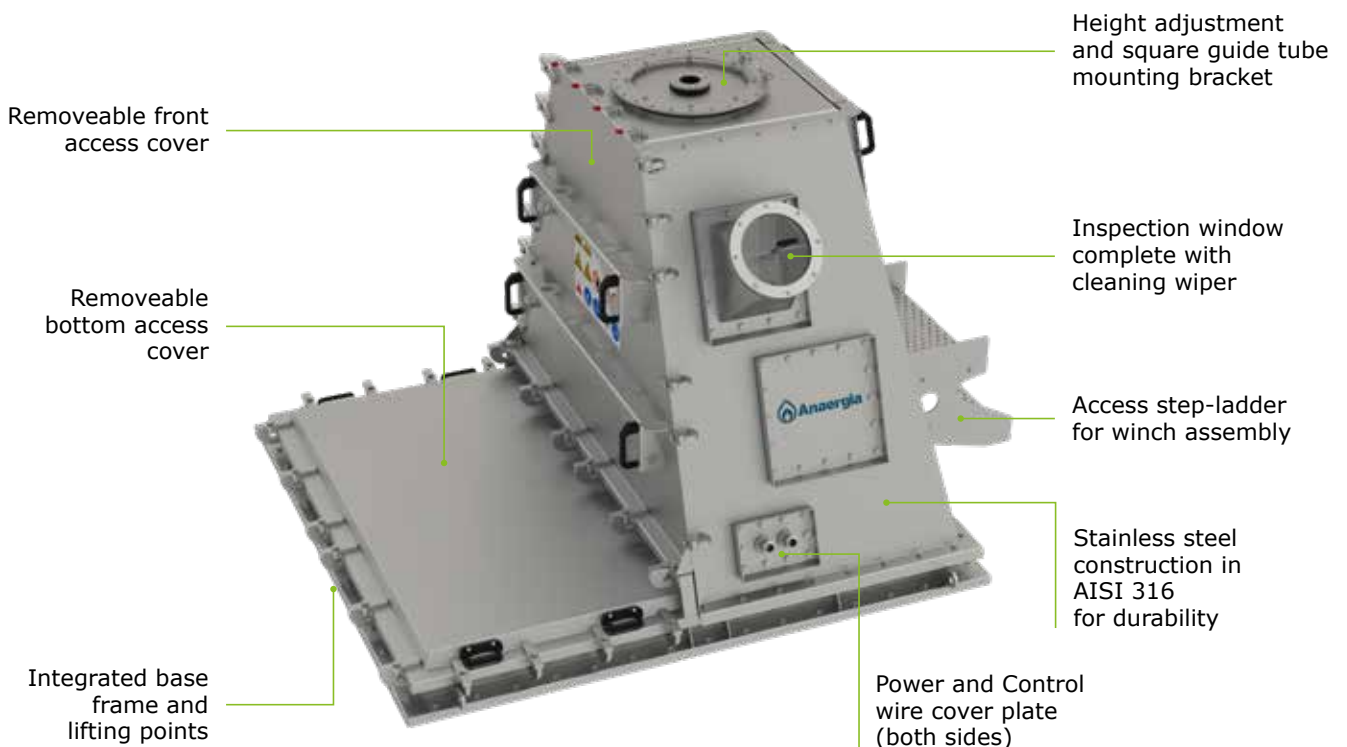
General mixer maintenance can be completed on the Service Box platform thanks to the removable access covers on the floor and the front. For larger maintenance tasks or in case of replacement, mixers can be completely removed by simply loosening clamping bolts. All of this is possible without biogas release or draining the tank. As a result, there is minimal or no impact on the biological process. That saves money and, of course, valuable time.

## EFFICIENT:

Extended operating times with quick access for maintenance tasks

## FLEXIBLE:

Suitable for tanks with concrete or membrane roof and for mixers with diameters of up to Ø1500mm (59 inches)



## SAFE:

Operating pressures of up to 18" of WC (45mbar) possible

## INTELLIGENT:

Auto positioning system takes control over mixer positioning without operator interference

## ROBUST:

Robust stainless-steel construction

# YOUR SPECIALIST FOR SERVICE AND SAFETY

SERVICE BOX HP



## EXPERIENCE FLEXIBILITY

- » Use of mixers from various manufacturers with a propeller diameter of up to 1500mm
- » Installation in tanks with level or concrete roofs possible

## UNCOMPROMISED SAFETY

- » Operating pressures of up to 18" of WC (45 mbar) possible
- » Integrated biogas tie-in points to simplify installation
- » Spare instrument connections for pressure switches or biogas analysers

## MAXIMIZE YOUR DIGESTER'S ACTIVE VOLUME

- » Maximum active tank volume thanks to the simple adjustment of the mixer height and angle via the height adjustment device
- » Automate the process with the auto-positioning system and level control monitoring

## QUICKER AND EASIER MAINTENANCE

- » Two service openings for smaller and larger maintenance tasks provide quick access while maintaining safety
- » Prevent biogas loss using the patented gas lock
- » Integrated viewing glass for quick inspection of the tank interior



Service Box HP with gas lock and installation frame

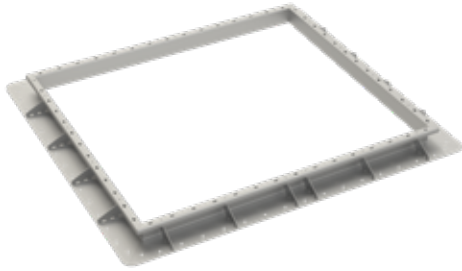
# OUR EXTRAS

FOR EVEN GREATER COMFORT

There are various attachments and accessories available for the Service Box HP. They can be optionally configured individually or as a package.

## INSTALLATION FRAME:

Installation frame for concrete roofs both new construction and retrofit



## MIXER SUPPORT POST:

Guides the mixer in the tank while restraining the high thrust mixing energy



## WINCH CABLE:

Winch cable between mixer and height adjustment device made of stainless steel or marine grade polymers



## GAS OUTLET:

Gas outlet available in several sizes (DIN or ANSI)



## GAS LOCK:

Gas lock available to suit your tank dimensions



## FLOOR BEARING AND ELEVATED TRIPODS:

Floor bearing for guiding the square mixer post on the tank floor



Floor bearing

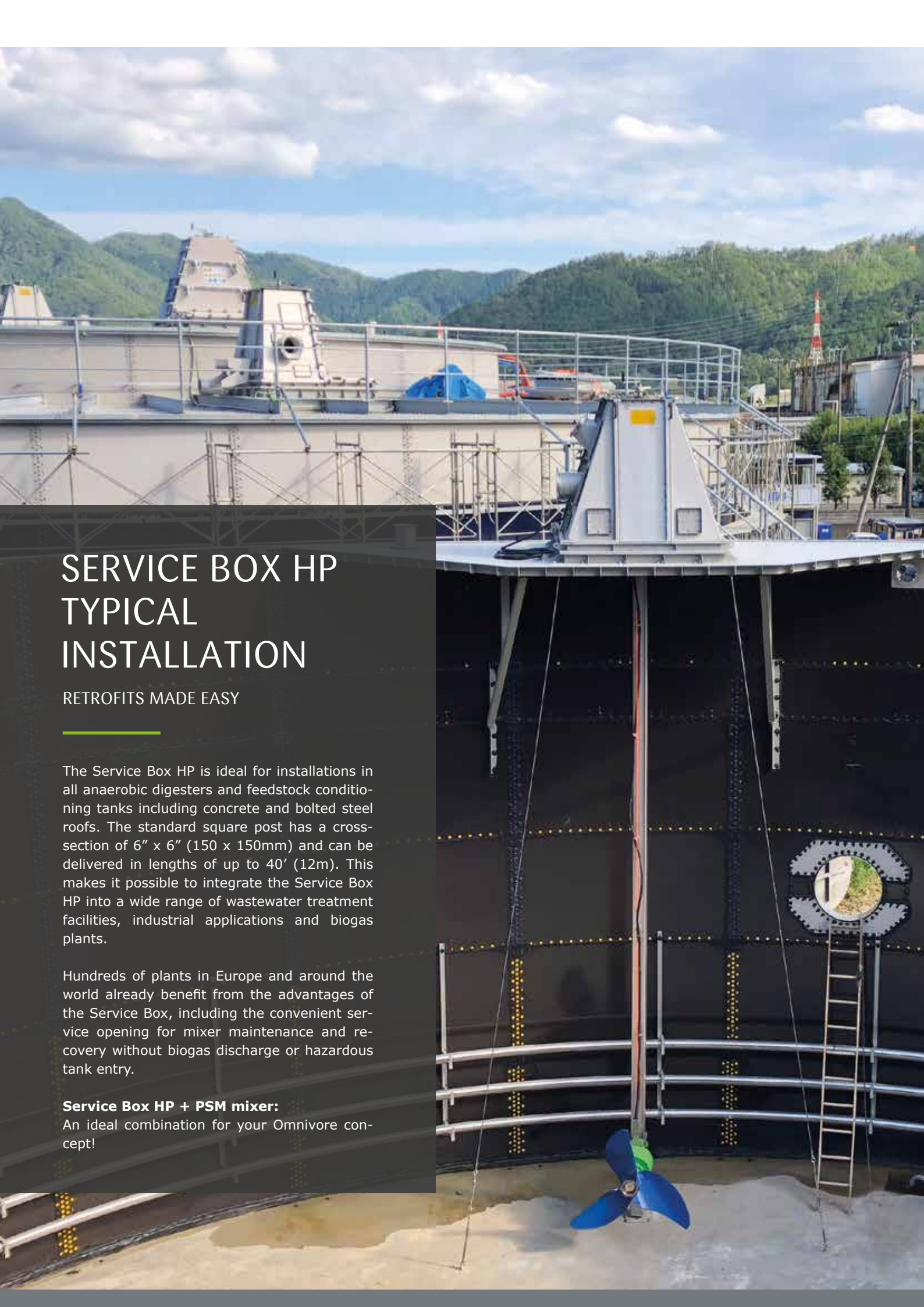


Elevated tripods available in 0.5m and 1m (20 inch and 40 inch) risers

## HEIGHT ADJUSTMENT WINCH:

Reposition the mixer height and angle using the external winch and positioning device. Gear ratios allow for installation of mixers up to 350kg (770lbs).





# SERVICE BOX HP TYPICAL INSTALLATION

RETROFITS MADE EASY

The Service Box HP is ideal for installations in all anaerobic digesters and feedstock conditioning tanks including concrete and bolted steel roofs. The standard square post has a cross-section of 6" x 6" (150 x 150mm) and can be delivered in lengths of up to 40' (12m). This makes it possible to integrate the Service Box HP into a wide range of wastewater treatment facilities, industrial applications and biogas plants.

Hundreds of plants in Europe and around the world already benefit from the advantages of the Service Box, including the convenient service opening for mixer maintenance and recovery without biogas discharge or hazardous tank entry.

#### **Service Box HP + PSM mixer:**

An ideal combination for your Omnivore concept!

## OUR ANAERGIA TECHNOLOGIES

We offer solutions for the following applications:

- » Pump Technology
- » Mixing Technology
- » Separation
- » Extrusion Technology
- » Screening & Sorting
- » Size Reduction
- » Organic Polishing
- » Conveyor Technology



**Anaergia Inc.**  
**Headquarters**  
 Burlington, Ontario,  
 Canada  
 T: +1 905-766-3333

**Anaergia UK Ltd.**  
**Sales Office**  
 St. Neots, Cambs,  
 United Kingdom  
 T: +44 1480-477-608

**DB Technologies BV**  
**Product Company**  
 Oldenzaal, Netherlands  
 T: +31 541-745031

**Anaergia Technologies GmbH**  
**Product Company**  
 Lippetal, Germany  
 T: +49 2923-610940

**Anaergia OREX**  
**Manufacturing s.r.l.**  
**Product Company**  
 Ovada, Italy  
 T: +39 0143-835665

**Anaergia s.r.l.**  
**Sales Office**  
 Treviglio, Italy  
 T: +39 0363-1970144

**Anaergia Services, LLC**  
**Sales Office**  
 Carlsbad, California,  
 United States  
 T: +1 760-436-8870

**Anaergia Africa (Pty) Ltd.**  
**Sales Office**  
 Cape Town, South Africa  
 T: +27 21-4181-163

**Anaergia Singapore Pte. Ltd.**  
**Sales Office**  
 Singapore  
 T: +65 6316-1575

### Anaergia Technologies GmbH

Oestinghausener Str. 12 · D-59510 Lippetal  
 T: (+49) 2923 / 610 940  
 www.anaergia-technologies.com

[info@anaergia.com](mailto:info@anaergia.com)

[www.anaergia.com](http://www.anaergia.com)

